

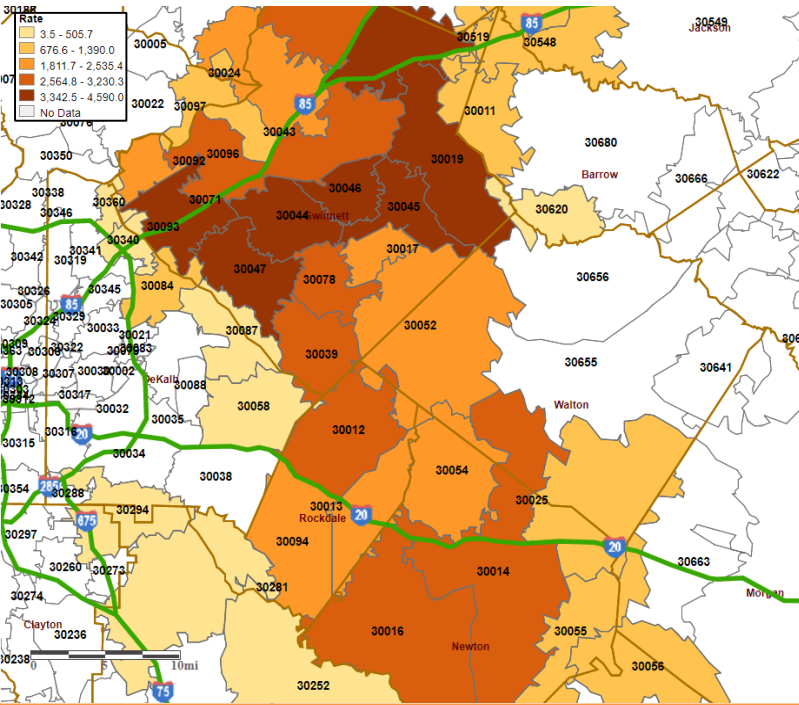
Gwinnett, Newton, & Rockdale County Health Departments



COVID-19 Snapshot, data as of 9am October 19, 2020

This is an emerging and dynamic situation, therefore our data and recommendations are subject to change. This report provides a snapshot of COVID-19 illnesses and specimen collection operations in response to the COVID-19 pandemic. The purpose of this report is to provide situational awareness to our district partners and community members.

COVID-19 Incidence Rate per 100,000 by zip-code, as of October 19, 2020



COVID-19 Cases & Deaths*				
	Confirmed cases	Presumptive Cases	Total Cases†	Total Deaths†
Gwinnett County	29,349	1,719	31,068	441
Newton County	2,758	261	3,019	95
Rockdale County	2,005	91	2,096	40
Total	34,112	2,071	36,183	576
Illness Characteristics*† N=36,183; n=576				
Among all Cases				
Among Deaths				
Gender				
Male	16,382 (45%)		284 (49%)	
Female	18,961 (52%)		291 (51%)	
Median Age (years)	38		74	
Age range (years)	0 – 103		15 - 102	
Total Hospitalizations	3,340 (9%)		439 (76%)	
Total with Underlying Conditions	6,897 (57%)**		427 (99%)**	
Underlying Conditions unknown	24,107		144	

Total Cases & Deaths by Race*† N = 36,183; Total Deaths n=576

	Among all Cases	Among Deaths		Among all Cases	Among Deaths
Asian	1,537 (4.25%)	35 (6.08%)	White	12,254 (33.89%)	310 (53.82%)
Hispanic/Latino	14 (0.04%)	0 (0%)	Hispanic/Latino	5,053 (13.97%)	58 (10.07%)
Non-Hispanic/ Latino	1,233 (3.41%)	35 (6.08%)	Non-Hispanic/ Latino	6,093 (16.86%)	251 (43.58%)
Not Specified	290 (0.80%)	0 (0%)	Not Specified	1,108 (3.06%)	<5 (0.17%)
Black	7,140 (19.74%)	172 (29.86%)	Other	3,091 (8.54%)	47 (8.16%)
Hispanic/Latino	154 (0.43%)	<5 (0.17%)	Hispanic/Latino	2,092 (5.78%)	45 (7.81%)
Non-Hispanic/ Latino	5,977 (16.52%)	169 (29.34%)	Non-Hispanic/ Latino	402 (1.11%)	<5 (0.35%)
Not Specified	1,009 (2.79%)	<5 (0.35%)	Not Specified	597 (1.65%)	0 (0%)
Native Hawaiian/Pacific Islander	48 (0.13%)	<5 (0.35%)	Unknown	12,070 (33.36%)	9 (1.56%)
Hispanic/Latino	9 (0.02%)	0 (0%)	Hispanic/Latino	1,580 (4.37%)	<5 (0.35%)
Non-Hispanic/ Latino	32 (0.09%)	<5 (0.35%)	Non-Hispanic/ Latino	454 (1.25%)	<5 (0.17%)
Not Specified	7 (0.02%)	0 (0%)	Not Specified	10,036 (27.75%)	6 (1.04%)
American Indian/Alaskan Native	30 (0.08%)	<5 (0.17%)	*Data Source: GA DPH, State Electronic Disease Surveillance System		
Hispanic/Latino	6 (0.02%)	0 (0%)	**Among patients with underlying conditions information available		
Non-Hispanic/ Latino	20 (0.06%)	<5 (0.17%)	Note: All data is provisional as data reporting, investigation, cleaning, and validating is ongoing.		
Not Specified	<5 (0.01%)	0 (0%)	† Represents total confirmed and presumptive cases		

Due to the increasing availability of antigen testing, effective 9/1/2020, we will begin reporting antigen positives in addition to PCR positive patients. Patients testing positive with an antigen test are considered presumptive cases and warrant Public Health investigation and control measures, but are not included in confirmed case counts. The remainder of data reported in this report will include total cases which encompasses confirmed and presumptive.

Gwinnett, Newton, & Rockdale County Health Departments

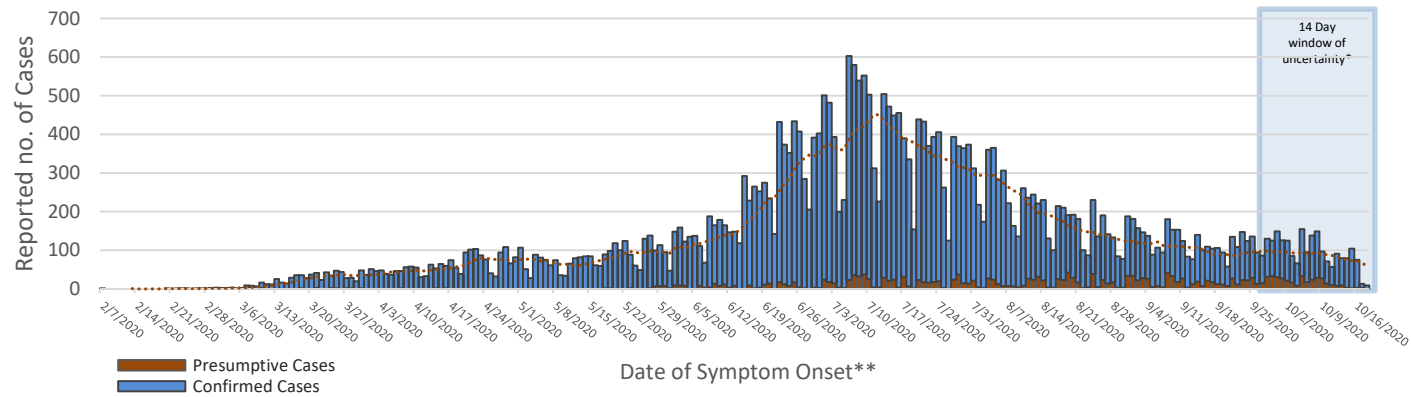


COVID-19 Snapshot, data as of 9am October 19, 2020

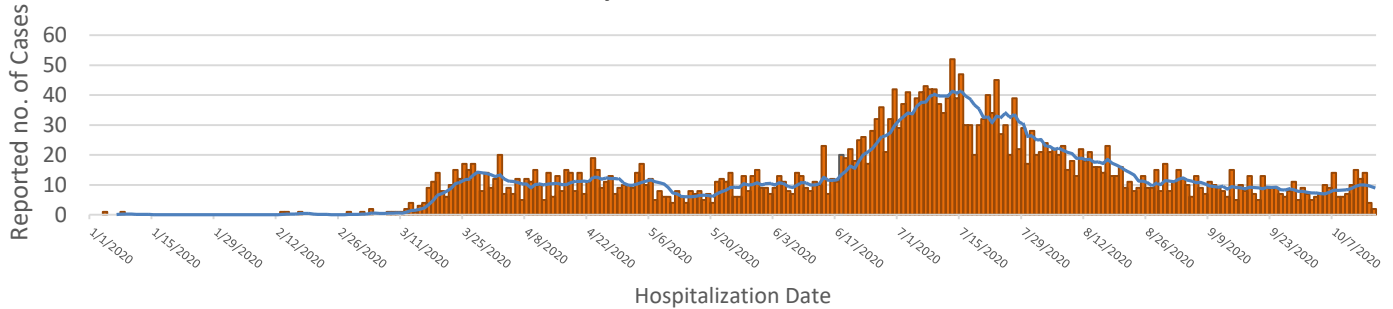
Gwinnett, Newton, and Rockdale County Health Department’s Epidemiology Program is responsible for investigating every case of COVID-19 with laboratory evidence of recent infection. The data displayed here represents the Epidemiology Program’s activities and provides a portrayal of the current situation in the district.

Per Gwinnett, Newton, and Rockdale County Health Departments reporting policy only COVID-19 cases with laboratory evidence of recent infection that reside within the three counties that make up the district are displayed here. According to the Centers for Disease Control and Prevention the case definition of COVID-19 case with laboratory evidence of recent infection does not include serology (i.e. antibody tests). These tests are reportable, but because they are not included in the case definition for a COVID-19 case with laboratory evidence of recent infection, are not displayed here.

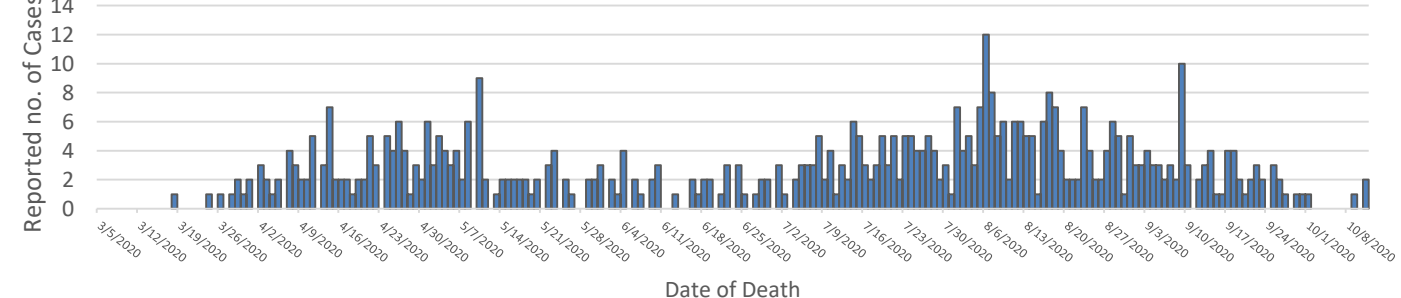
Reported COVID-19 Cases in residents of Gwinnett, Newton, and Rockdale Counties, as of 10/19/2020[†]



Reported Hospitalizations of COVID-19 cases in residents of Gwinnett, Newton, and Rockdale Counties, by Date of Occurrence[†]



Reported Deaths Among COVID-19 Cases in residents of Gwinnett, Newton, and Rockdale Counties, by Date of Occurrence[†]



[†]14-day window of uncertainty – Confirmed cases over the last 14 days may not be accounted for due to illnesses yet to be reported or test result that may still be pending.
^{**}For individuals missing symptom onset date, date of first positive specimen collection was used, if both symptom onset and date of first specimen collection are both missing date reported to Public Health Was used
[†] Represents total confirmed and presumptive cases
 Source for data provided above: GA DPH, State Electronic Disease Surveillance System; Note: All data is provisional as data reporting, investigation, cleaning, and validating is ongoing

Positivity Data from GNR Specimen Collection Sites, as Compared with all Reported Lab Specimens from Gwinnett, Newton, Rockdale Counties and GA (Cumulative - 3/1/2020 – 10/19/2020).

Two specimen Collection Sites (SPOCs) operate daily in Gwinnett and one alternating weeks in Newton and Rockdale Counties. SPOCs continue to offer specimen collection services at no cost to patients. Specimen collection at SPOC sties is done by appointment only. Appointments can be made on our website at www.gnrhealth.com or by calling 770-513-5631. A total of 4,000-5,000 specimens are collected each week.

	GNR SPOCs	Gwinnett	Newton	Rockdale	Georgia
Positive Tests	8,456 (9.9%)	26,492 (10.1%)	2,525 (9.1%)	1,949 (8.1%)	319,431 (9.6%)
Negative Tests	77,147 (90.0%)	236,197 (89.9%)	25,164 (90.9%)	22,168 (92.9%)	2,994,848 (89.4%)
Total Tests	86,034*	262,689	27,689	24,117	3,314,279

Data Source, SENDSS, Testing by District/County Quick Report. Data numbers may not align with current totals due to delay in report functionality . Report run 10/19/20. **Total includes pending and indeterminate test results.

7-day Positivity Data by County for Gwinnett, Newton, and Rockdale Counties, Week 10/10/2020-10/16/2020

7-day positivity data represents the percentage of positive PCR test results in the district, by county, for the previous 7-day period. All COVID-19 cases are required to be reported to Public Health, but because of a significant reporting delay from facilities to Public Health, these numbers are provisional and subject to change. Also, due to the wide availability of testing in the community, numbers can include individuals who have been tested more than once.

Seven Day Positivity Data			
	Gwinnett	Newton	Rockdale
Positive Tests	584 (5.5%)	43 (5.8%)	61 (9.0%)
Negative Tests	10,065 (95.5%)	694 (94.2%)	614 (91.0%)
Total Tests	10,649	737	675

Data Source, SENDSS, Testing by District/County Quick Report. Data numbers may not align with current totals due to delay in report functionality . Report run 10/19/20 5pm.

14-day Case Rates for Gwinnett, Newton, and Rockdale Counties by Zip Code.

COVID-19 case rate data is calculated using the total number of cases identified during a specified time frame, divided by the population living within that zip code, multiplied by 100,000. Zip Codes with smaller population sizes may see significant variability from week to week. All COVID-19 cases are required to be reported to local public health; however, there can often be a significant reporting delay from facilities to public health. Therefore, these numbers are provisional and subject to change. In accordance with DPH, the date a lab is reported is the date used to calculate two-week case rates. This date will differ, sometimes significantly, from the date an individual becomes ill with symptoms of COVID-19 or the date an individual tested positive for COVID-19.

Two week Case Rates per 100,000 by Zip Code N=1,717; Week 10/03/20 – 10/16/20†

County	Zip	# of Cases	Case Rate	% Change	County	Zip	# of cases	Case Rate	% Change		
Gwinnett	30011	<5	25.93	-20.00	Gwinnett	30518	66	116.43	-14.29		
	30017	29	118.77	-14.71		30519	108	232.68	-2.70		
	30019	124	251.72	-4.62		30548	9	48.31	-25.00		
	30024	87	112.50	12.99		30620	8	58.63	60.00		
	30039	61	132.25	1.67		Newton	30014	28	72.83	-20.00	
	30043	164	180.87	-2.38			30016	86	158.55	17.81	
	30044	131	148.80	-4.38			30025	<5	32.23	50.00	
	30045	64	159.29	-15.79			30054	18	151.21	63.64	
	30046	64	171.96	-7.25			30055	<5	60.50	-50.00	
	30047	108	165.09	18.68			30056	0	0.00	0.00	
	30052	60	90.97	0.00	Rockdale		30012	40	114.90	37.93	
	30071	30	118.96	-6.25			30013	31	117.57	40.91	
	30078	40	111.66	0.00			30058	0	0.00	0.00	
	30084	9	23.39	-50.00			30094	48	137.43	71.43	
	30087	14	35.00	-6.67		30252	0	0.00	0.00		
	30092	64	180.69	10.34		30281	<5	1.48	0.00		
	30093	70	127.03	7.69		30294	<5	4.79	0.00		
	30096	93	136.85	19.23		Overall 14-day Case Rates per 100,000					
	30097	26	55.43	-10.34		Georgia	-	-	17,701	168.00	4.35
	30340	10	35.68	0.00		Gwinnett	-	-	1,263	136.00	0.00
30360	6	37.67	-14.29	Newton	-	-	117	107.0	20.22		
30517	7	47.76	75.00	Rockdale	-	-	110	121.00	53.16		

Data Source: DPH County Indicator Report, SendSS, data pulled and cleaned as of Monday at 9am. Case rate is reported as 14-day case count per 100k residents based on 2018 census data. Case counts and case rates are calculated using total confirmed and presumptive cases.

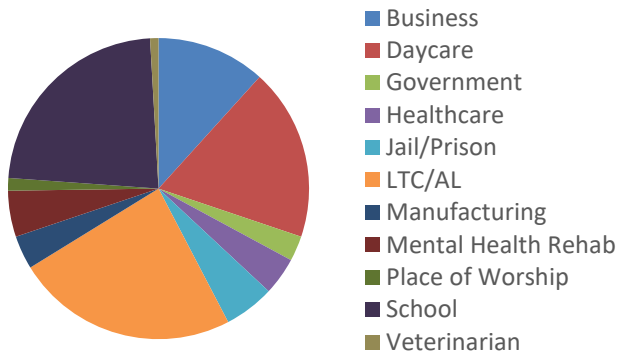
Epidemiology Overview for Outbreaks



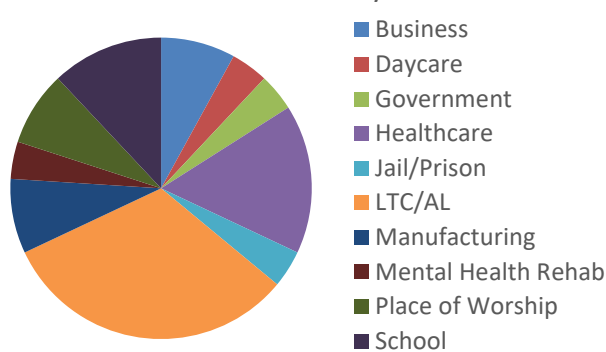
COVID-19 Snapshot, data as 12pm October 19, 2020

All three counties within the districts are experiencing outbreaks of COVID-19. The information below is intended to provide information on where outbreaks are occurring within the district by county. Totals represent data collected since March 19, 2020.

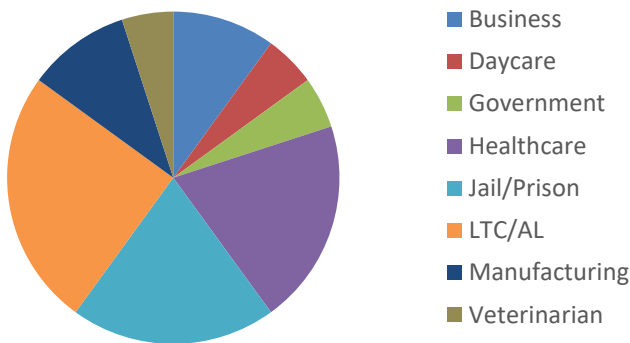
Number of Outbreaks by Facility Type for Gwinnett County



Number of Outbreaks by Facility type for Newton County

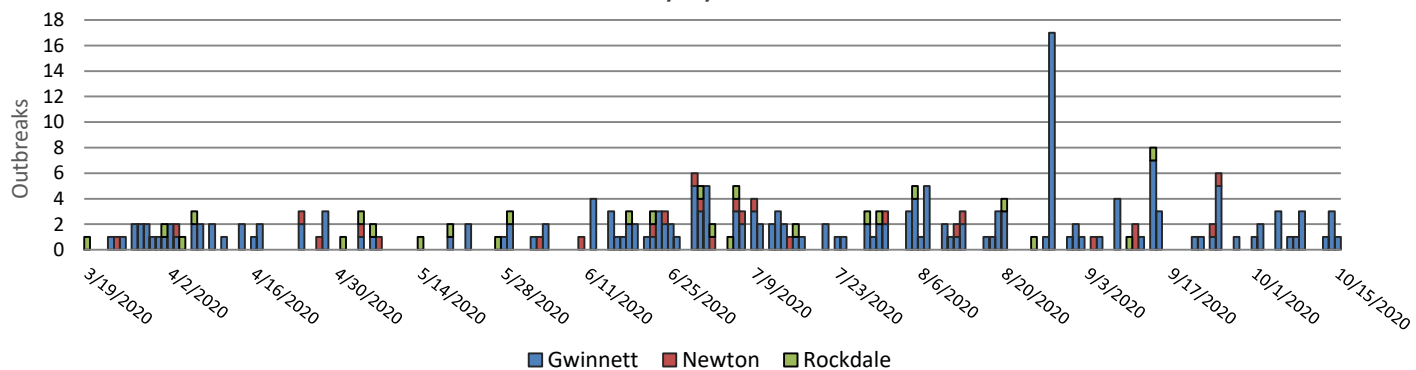


Number of Outbreaks by Facility Type for Rockdale County



Number of Outbreaks by Facility Type N=267			
Facility Type	Gwinnett n=222	Newton n=25	Rockdale n=20
Business	11.71%	8.00%	10.00%
Government	2.70%	4.00%	5.00%
Daycare	18.47%	4.00%	5.00%
Healthcare	4.05%	16.00%	20.00%
Jail/Prison	5.41%	4.00%	20.00%
LTC/AL	23.87%	32.00%	25.00%
Manufacturing	3.60%	8.00%	10.00%
Mental Health Rehab	4.95%	4.00%	0%
Place of Worship	1.35%	8.00%	0%
Schools	22.97%	12.00%	0%
Veterinarian	0.90%	0%	5.00%

Number of Outbreaks Per County Over Time, Gwinnett, Newton and Rockdale Counties, as of 10/19/2020



Source for data provided above: GA DPH, State Electronic Disease Surveillance System; Note: All data is provisional as data reporting, investigation, cleaning, and validating is ongoing; † Represents total confirmed and presumptive cases

Epidemiology Overview for Gwinnett County



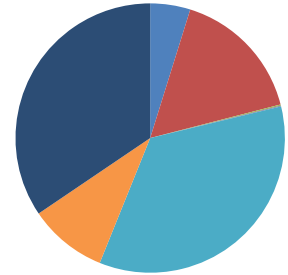
COVID-19 Snapshot, data as of 9am October 19, 2020

Provided here is a detailed look at the activities of the Epidemiology Program in Gwinnett County, one of three counties represented in district 3-4. Gwinnett county's population is 936, 250 and makes up 82.2% of residents within the district.

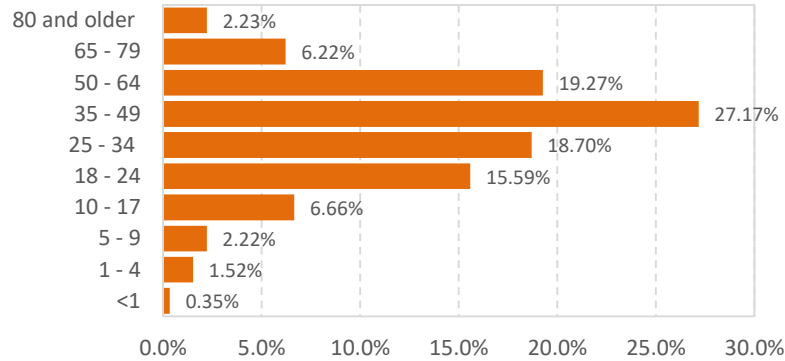
In Gwinnett County there has been a 3.2% increase in newly confirmed COVID-19 Cases between the week of **10/5/20 – 10/12/2020 (n=30,098)** and **10/12/20 – 10/19/2020 (n=31,068)**.

Race Distribution of Cases in Gwinnett County

- Asian
- Black
- Native Hawaiian/Pacific Islander
- American Indian/Alaskan Native
- White
- Other
- Unknown



Age Distribution of Cases in Gwinnett County



COVID-19 Cases & Deaths*				
	Confirmed Cases	Presumptive Cases	Total Cases†	Total Deaths‡
Outbreak	1,303	52	1,355	162
Total	29,349	1,719	31,068	441
Illness Characteristics*† N=31,068; n=441				
	Among all Cases	Among Deaths		
Gender				
Male	14,193 (46%)	219 (50%)		
Female	16,137 (52%)	222 (50%)		
Median Age (years)	38	73		
Age range (years)	0 – 103	15 - 102		
Total Hospitalizations	2,805 (9%)	358 (81%)		
Total with Underlying Conditions	5,699 (56%)**	350 (99%)**		
Underlying Conditions unknown	20,909	88		

Total Cases & Deaths by Race*† N = 31,068; Total Deaths n=441

	Among all Cases	Among Deaths		Among all Cases	Among Deaths
Asian	1,495 (4.81%)	35 (7.94%)	White	10,451 (34.89%)	236 (53.51%)
Hispanic/Latino	14 (0.05%)	0 (0%)	Hispanic/Latino	4,753 (15.30%)	55 (12.47%)
Non-Hispanic/ Latino	1,197 (3.85%)	35 (7.94%)	Non-Hispanic/ Latino	5,093 (16.39%)	180 (40.82%)
Not Specified	284 (0.91%)	0 (0%)	Not Specified	994 (3.20%)	<5 (0.23%)
Black	5,027 (16.18%)	116 (26.30%)	Other	2,925 (9.42%)	46 (10.43%)
Hispanic/Latino	135 (0.43%)	<5 (0.23%)	Hispanic/Latino	2,016 (6.49%)	44 (9.98%)
Non-Hispanic/ Latino	4,169 (13.42%)	114 (25.85%)	Non-Hispanic/ Latino	371 (1.19%)	<5 (0.45%)
Not Specified	723 (2.33%)	<5 (0.23%)	Not Specified	538 (1.73%)	0 (0%)
Native Hawaiian/Pacific Islander	46 (0.15%)	<5 (0.45%)	Unknown	10,709 (34.47%)	6 (1.36%)
Hispanic/Latino	9 (0.03%)	0 (0%)	Hispanic/Latino	1,527 (4.92%)	<5 (0.45%)
Non-Hispanic/ Latino	30 (0.10%)	<5 (0.45%)	Non-Hispanic/ Latino	391 (1.26%)	<5 (0.23%)
Not Specified	7 (0.02%)	0 (0%)	Not Specified	8,791 (28.30%)	<5 (0.68%)
American Indian/Alaskan Native	26 (0.08%)	0 (0%)			
Hispanic/Latino	5 (0.02%)	0 (0%)			
Non-Hispanic/Latino	17 (0.05%)	0 (0%)			
Not Specified	<5 (0.01%)	0 (0%)			

*Data Source: GA DPH, State Electronic Disease Surveillance System
 **Among patients with underlying conditions information available
 Note: All data is provisional as data reporting, investigation, cleaning, and validating is ongoing.
 † Represents total confirmed and presumptive cases

Confirmed cases are those tested using Molecular Tests (i.e. PCR).
 Presumptive Cases are those tested using Antigen Tests.

Epidemiology Overview for Newton County

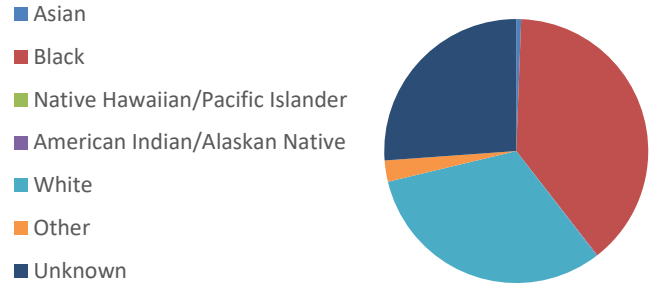


COVID-19 Snapshot, data as of 9am October 19, 2020

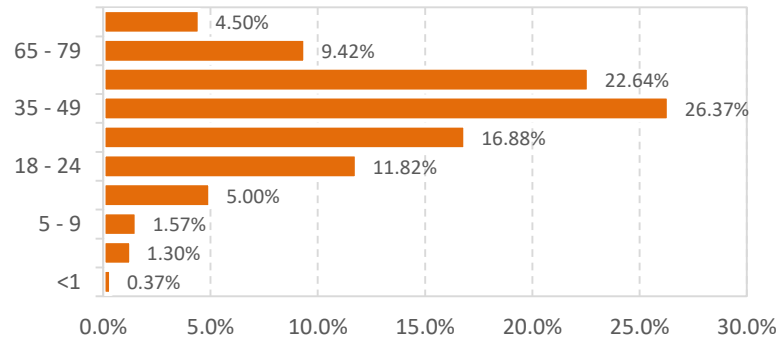
Provided here is a detailed look at the activities of the Epidemiology Program in Newton County, one of three counties represented in district 3-4. Newton county's population is 111, 744 and makes up 9.8% of residents within the district.

In Newton County there has been a 3.0% increase in newly confirmed COVID-19 Cases between the week of 10/5/20 – 10/12/20 (n=2,931) and 10/5/20 – 10/12/20 (n=3,019).

Race Distribution of Cases in Newton County



Age Distribution of Cases for Newton County



COVID-19 Cases & Deaths*				
	Confirmed Cases	Presumptive Cases	Total Cases†	Total Deaths†
Outbreak	272	7	279	46
Total	2,758	261	3,019	95
Illness Characteristics*† N=3,019; n=95				
	Among all Cases	Among Deaths		
Gender				
Male	1,276 (42%)	45 (47%)		
Female	1,687 (56%)	49 (52%)		
Median Age (years)	44	79		
Age range (years)	0 – 100	50 - 98		
Total Hospitalizations	286 (9%)	50 (53%)		
Total with Underlying Conditions	663 (60%)**	46 (96%)**		
Underlying Conditions unknown	1,919	47		

Total Cases & Deaths by Race*† N = 3,019; Total Deaths n=95

	Among all Cases	Among Deaths		Among all Cases	Among Deaths
Asian	18 (0.60%)	0 (0%)	White	959 (31.77%)	59 (62.11%)
Hispanic/Latino	0 (0%)	0 (0%)	Hispanic/Latino	137 (4.54%)	<5 (1.05%)
Non-Hispanic/ Latino	16 (0.53%)	0 (0%)	Non-Hispanic/ Latino	745 (24.68%)	58 (61.05%)
Not Specified	<5 (0.07%)	0 (0%)	Not Specified	77 (2.55%)	0 (0%)
Black	1,173 (38.85%)	33 (34.74%)	Other	78 (2.58%)	0 (0%)
Hispanic/Latino	10 (0.33%)	0 (0%)	Hispanic/Latino	32 (1.06%)	0 (0%)
Non-Hispanic/ Latino	1,013 (33.55%)	33 (34.74%)	Non-Hispanic/ Latino	12 (0.40%)	0 (0%)
Not Specified	150 (4.97%)	0 (0%)	Not Specified	34 (1.13%)	0 (0%)
Native Hawaiian/Pacific Islander	0 (0%)	0 (0%)	Unknown	788 (26.10%)	<5 (2.11%)
Hispanic/Latino	0 (0%)	0 (0%)	Hispanic/Latino	21 (0.70%)	0 (0%)
Non-Hispanic/ Latino	0 (0%)	0 (0%)	Non-Hispanic/ Latino	46 (1.52%)	<5 (2.11%)
Not Specified	0 (0%)	0 (0%)	Not Specified	721 (23.88%)	0 (0%)
American Indian/Alaskan Native	<5 (0.10%)	<5 (1.05%)			
Hispanic/Latino	<5 (0.03%)	0 (0%)			
Non-Hispanic/Latino	<5 (0.07%)	<5 (1.05%)			
Not Specified	0 (0%)	0 (0%)			

*Data Source: GA DPH, State Electronic Disease Surveillance System
 **Among patients with underlying conditions information available
 Note: All data is provisional as data reporting, investigation, cleaning, and validating is ongoing.
 † = Represents total confirmed and presumptive cases

Epidemiology Overview for Rockdale County

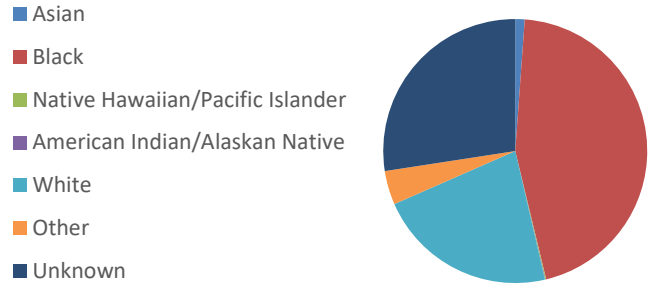


COVID-19 Snapshot, data as of 9am October 19, 2020

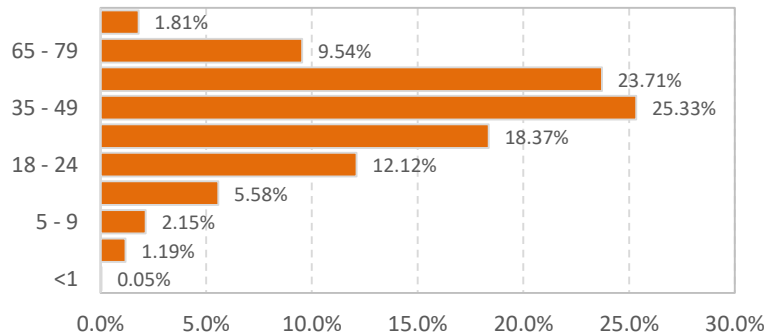
Provided here is a detailed look at the activities of the Epidemiology Program in Rockdale County, one of three counties represented in district 3-4. Rockdale county's population is 90, 896 and makes up 7.9% of residents within the district.

In Rockdale County there has been a 3.9% increase in newly confirmed COVID-19 Cases between the week of **10/5/2020 – 10/12/2020 (n=2,017)** and **10/12/2020 – 10/19/2020 (n=2,096)**.

Race Distribution of Cases in Rockdale County



Age Distribution of Cases for Rockdale County



COVID-19 Cases & Deaths*

	Confirmed Cases	Presumptive Cases	Total Cases†	Total Deaths‡
Outbreak	101	2	103	3
Total	2,005	91	2,096	40

Illness Characteristics*† N=2,096; n=40

	Among all Cases	Among Deaths
Gender		
Male	913 (44%)	20 (50%)
Female	1,137 (54%)	20 (50%)
Median Age (years)	41	69
Age range (years)	0 – 100	27 – 93
Total Hospitalizations	249 (12%)	31 (78%)
Total with Underlying Conditions	535 (65%)**	31 (100%)**
Underlying Conditions unknown	1,279	9

Total Cases & Deaths by Race*† N = 2,096; Total Deaths n=40

	Among all Cases	Among Deaths		Among all Cases	Among Deaths
Asian	24 (1.15%)	0 (0%)	White	462 (22.04%)	15 (37.50%)
Hispanic/Latino	0 (0%)	0 (0%)	Hispanic/Latino	163 (7.78%)	<5 (5.00%)
Non-Hispanic/ Latino	20 (0.95%)	0 (0%)	Non-Hispanic/ Latino	261 (12.45%)	13 (32.50%)
Not Specified	<5 (0.19%)	0 (0%)	Not Specified	38 (1.81%)	0 (0%)
Black	945 (45.09%)	23 (57.50%)	Other	87 (4.15%)	<5 (2.50%)
Hispanic/Latino	9 (0.43%)	0 (0%)	Hispanic/Latino	44 (2.10%)	<5 (2.50%)
Non-Hispanic/ Latino	799 (38.12%)	22 (55.00%)	Non-Hispanic/ Latino	18 (0.86%)	0 (0%)
Not Specified	137 (6.54%)	<5 (2.50%)	Not Specified	25 (1.19%)	0 (0%)
Native Hawaiian/Pacific Islander	<5 (0.10%)	0 (0%)	Unknown	575 (27.43%)	<5 (2.50%)
Hispanic/Latino	0 (0%)	0 (0%)	Hispanic/Latino	32 (1.53%)	0 (0%)
Non-Hispanic/ Latino	<5 (0.10%)	0 (0%)	Non-Hispanic/ Latino	17 (0.81%)	0 (0%)
Not Specified	0 (0%)	0 (0%)	Not Specified	526 (25.10%)	<5 (2.50%)
American Indian/Alaskan Native	<5 (0.05%)	0 (0.00%)	*Data Source: GA DPH, State Electronic Disease Surveillance System		
Hispanic/Latino	0 (0%)	0 (0%)	**Among patients with underlying conditions information available		
Non-Hispanic/Latino	<5 (0.05%)	0 (0%)	Note: All data is provisional as data reporting, investigation, cleaning, and validating is ongoing.		
Not Specified	0 (0%)	0 (0%)	† Represents total confirmed and presumptive cases		

Confirmed cases are those tested using Molecular Tests (i.e. PCR).
Presumptive Cases are those tested using Antigen Tests.