

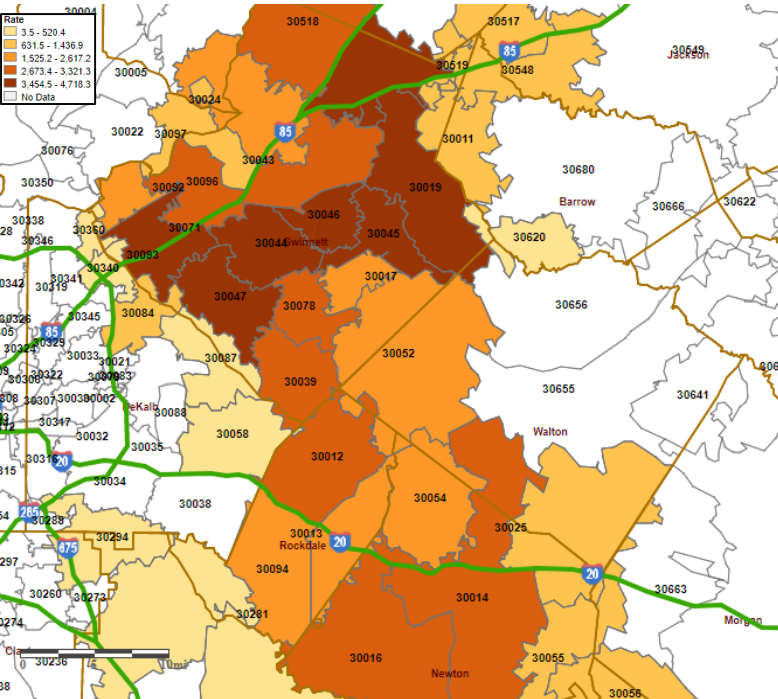
# Gwinnett, Newton, & Rockdale County Health Departments



## COVID-19 Snapshot, data as of 9am October 26, 2020

This is an emerging and dynamic situation, therefore our data and recommendations are subject to change. This report provides a snapshot of COVID-19 illnesses and specimen collection operations in response to the COVID-19 pandemic. The purpose of this report is to provide situational awareness to our district partners and community members.

COVID-19 Incidence Rate per 100,000 by zip-code, as of October 26, 2020



COVID-19 Cases & Deaths*				
	Confirmed cases	Presumptive Cases	Total Cases†	Total Deaths†
Gwinnett County	29,987	1,822	31,809	454
Newton County	2,815	273	3,088	97
Rockdale County	2,084	99	2,183	41
<b>Total</b>	<b>34,886</b>	<b>2,194</b>	<b>37,080</b>	<b>592</b>
Illness Characteristics*† N=37,080; n=592				
Among all Cases				
Among Deaths				
Gender				
Male	16,816 (45%)		293 (49%)	
Female	19,428 (52%)		298 (50%)	
Median Age (years)	38		74	
Age range (years)	0 – 119		15 - 102	
Total Hospitalizations	3,390 (9%)		452 (76%)	
Total with Underlying Conditions	7,347 (57%)**		436 (99%)**	
Underlying Conditions unknown	24,247		151	

Total Cases & Deaths by Race\*† N = 37,080; Total Deaths n=576

	Among all Cases	Among Deaths		Among all Cases	Among Deaths
<b>Asian</b>	<b>1,618 (4.36%)</b>	<b>37 (6.25%)</b>	<b>White</b>	<b>12,786 (34.48%)</b>	<b>320 (54.05%)</b>
Hispanic/Latino	14 (0.04%)	0 (0%)	Hispanic/Latino	5,144 (13.87%)	61 (10.30%)
Non-Hispanic/ Latino	1,302 (3.51%)	37 (6.25%)	Non-Hispanic/ Latino	6,491 (17.51%)	258 (43.58%)
Not Specified	302 (0.81%)	0 (0%)	Not Specified	1,151 (3.10%)	<5 (0.17%)
<b>Black</b>	<b>7,566 (20.40%)</b>	<b>175 (29.56%)</b>	<b>Other</b>	<b>3,110 (8.39%)</b>	<b>48 (8.11%)</b>
Hispanic/Latino	162 (0.44%)	<5 (0.17%)	Hispanic/Latino	2,129 (5.74%)	47 (7.94%)
Non-Hispanic/ Latino	6,350 (17.13%)	173 (29.22%)	Non-Hispanic/ Latino	409 (1.10%)	<5 (0.17%)
Not Specified	1,054 (2.84%)	<5 (0.17%)	Not Specified	572 (1.54%)	0 (0%)
<b>Native Hawaiian/Pacific Islander</b>	<b>49 (0.13%)</b>	<b>&lt;5 (0.34%)</b>	<b>Unknown</b>	<b>11,921 (32.15%)</b>	<b>9 (1.52%)</b>
Hispanic/Latino	10 (0.03%)	0 (0%)	Hispanic/Latino	1,632 (4.40%)	<5 (0.34%)
Non-Hispanic/ Latino	32 (0.09%)	<5 (0.34%)	Non-Hispanic/ Latino	477 (1.29%)	<5 (0.34%)
Not Specified	7 (0.02%)	0 (0%)	Not Specified	9,812 (26.46%)	5 (0.84%)
<b>American Indian/Alaskan Native</b>	<b>30 (0.08%)</b>	<b>&lt;5 (0.17%)</b>	*Data Source: GA DPH, State Electronic Disease Surveillance System		
Hispanic/Latino	7 (0.02%)	0 (0%)	**Among patients with underlying conditions information available		
Non-Hispanic/ Latino	19 (0.05%)	<5 (0.17%)	Note: All data is provisional as data reporting, investigation, cleaning, and validating is ongoing.		
Not Specified	<5 (0.01%)	0 (0%)	† Represents total confirmed and presumptive cases		

Due to the increasing availability of antigen testing, effective 9/1/2020, we will begin reporting antigen positives in addition to PCR positive patients. Patients testing positive with an antigen test are considered presumptive cases and warrant Public Health investigation and control measures, but are not included in confirmed case counts. The remainder of data reported in this report will include total cases which encompasses confirmed and presumptive.

# Gwinnett, Newton, & Rockdale County Health Departments

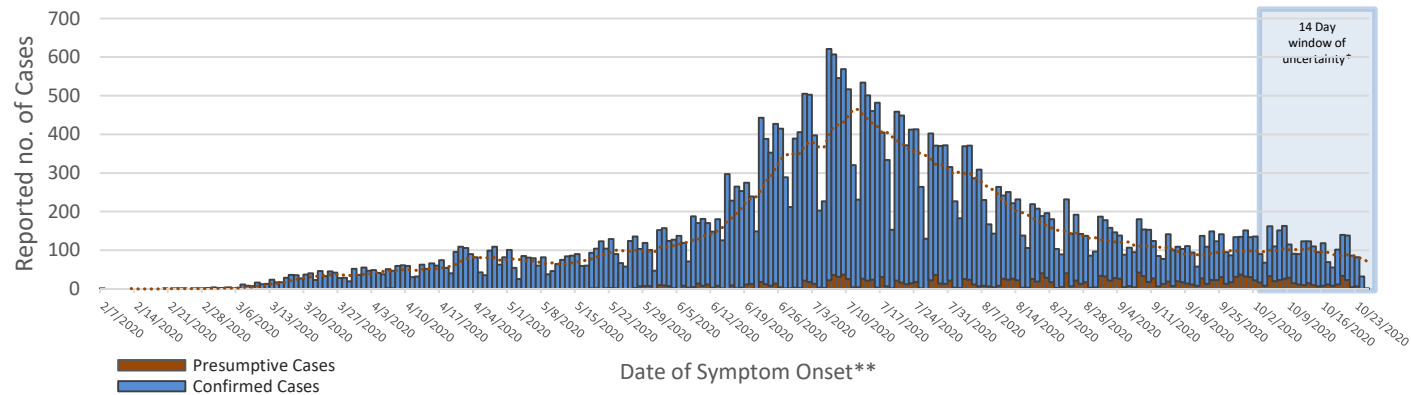


## COVID-19 Snapshot, data as of 9am October 26, 2020

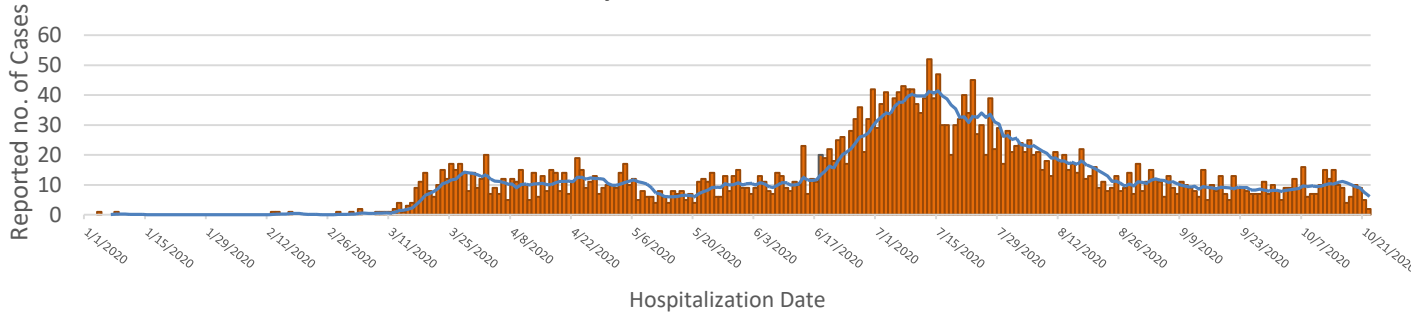
Gwinnett, Newton, and Rockdale County Health Department’s Epidemiology Program is responsible for investigating every case of COVID-19 with laboratory evidence of recent infection. The data displayed here represents the Epidemiology Program’s activities and provides a portrayal of the current situation in the district.

Per Gwinnett, Newton, and Rockdale County Health Departments reporting policy only COVID-19 cases with laboratory evidence of recent infection that reside within the three counties that make up the district are displayed here. According to the Centers for Disease Control and Prevention the case definition of COVID-19 case with laboratory evidence of recent infection does not include serology (i.e. antibody tests). These tests are reportable, but because they are not included in the case definition for a COVID-19 case with laboratory evidence of recent infection, are not displayed here.

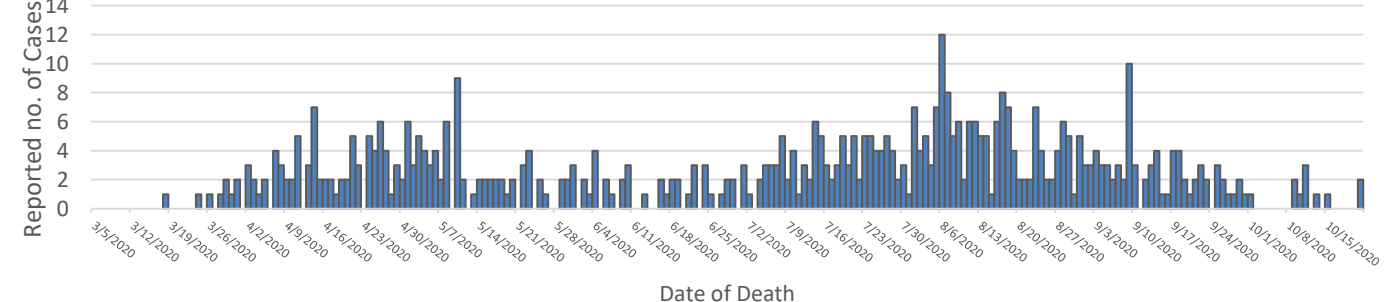
Reported COVID-19 Cases in residents of Gwinnett, Newton, and Rockdale Counties, as of 10/26/2020<sup>†</sup>



Reported Hospitalizations of COVID-19 cases in residents of Gwinnett, Newton, and Rockdale Counties, by Date of Occurrence<sup>†</sup>



Reported Deaths Among COVID-19 Cases in residents of Gwinnett, Newton, and Rockdale Counties, by Date of Occurrence<sup>†</sup>



<sup>†</sup>14-day window of uncertainty – Confirmed cases over the last 14 days may not be accounted for due to illnesses yet to be reported or test result that may still be pending.  
<sup>\*\*</sup>For individuals missing symptom onset date, date of first positive specimen collection was used, if both symptom onset and date of first specimen collection are both missing date reported to Public Health Was used  
<sup>†</sup> Represents total confirmed and presumptive cases  
 Source for data provided above: GA DPH, State Electronic Disease Surveillance System; Note: All data is provisional as data reporting, investigation, cleaning, and validating is ongoing

## Positivity Data from GNR Specimen Collection Sites, as Compared with all Reported Lab Specimens from Gwinnett, Newton, Rockdale Counties and GA (Cumulative - 3/1/2020 – 10/26/2020).

Two specimen Collection Sites (SPOCs) operate daily in Gwinnett and one alternating weeks in Newton and Rockdale Counties. SPOCs continue to offer specimen collection services at no cost to patients. Specimen collection at SPOC sties is done by appointment only. Appointments can be made on our website at [www.gnrhealth.com](http://www.gnrhealth.com) or by calling 770-513-5631. A total of 4,000-5,000 specimens are collected each week.

	GNR SPOCs	Gwinnett	Newton	Rockdale	Georgia
Positive Tests	8,568 (9.8%)	27,318 (9.9%)	2,585 (9.0%)	2,032 (8.1%)	329,506 (9.5%)
Negative Tests	78,116 (90.0%)	249,743 (90.1%)	26,097 (91.0%)	23,068 (91.9%)	3,131,882 (89.5%)
Total Tests	87,770*	277,061	28,682	25,100	3,461,388

Data Source, SENDSS, Testing by District/County Quick Report. Data numbers may not align with current totals due to delay in report functionality . Report run 10/26/20.\*\*Total includes pending and indeterminate test results.

## 7-day Positivity Data by County for Gwinnett, Newton, and Rockdale Counties, Week 10/17/2020-10/23/2020

7-day positivity data represents the percentage of positive PCR test results in the district, by county, for the previous 7-day period. All COVID-19 cases are required to be reported to Public Health, but because of a significant reporting delay from facilities to Public Health, these numbers are provisional and subject to change. Also, due to the wide availability of testing in the community, numbers can include individuals who have been tested more than once.

Seven Day Positivity Data			
	Gwinnett	Newton	Rockdale
Positive Tests	682 (5.8%)	53 (6.2%)	78 (8.9%)
Negative Tests	11,148 (94.2%)	807 (93.8%)	797 (91.1%)
Total Tests	11,830	860	875

Data Source, SENDSS, Testing by District/County Quick Report. Data numbers may not align with current totals due to delay in report functionality . Report run 10/26/205pm.

## 14-day Case Rates for Gwinnett, Newton, and Rockdale Counties by Zip Code.

COVID-19 case rate data is calculated using the total number of cases identified during a specified time frame, divided by the population living within that zip code, multiplied by 100,000. Zip Codes with smaller population sizes may see significant variability from week to week. All COVID-19 cases are required to be reported to local public health; however, there can often be a significant reporting delay from facilities to public health. Therefore, these numbers are provisional and subject to change. In accordance with DPH, the date a lab is reported is the date used to calculate two-week case rates. This date will differ, sometimes significantly, from the date an individual becomes ill with symptoms of COVID-19 or the date an individual tested positive for COVID-19.

### Two week Case Rates per 100,000 by Zip Code N=1,717; Week 10/10/20 – 10/23/20†

County	Zip	# of Cases	Case Rate	% Change	County	Zip	# of cases	Case Rate	% Change	
Gwinnett	30011	7	45.37	75.00	Gwinnett	30518	74	130.54	12.12	
	30017	37	151.54	27.59		30519	85	193.13	-21.30	
	30019	132	267.96	6.45		30548	15	80.52	66.67	
	30024	90	116.38	3.45		30620	5	36.65	-37.50	
	30039	80	173.44	31.15	Newton	30014	28	72.83	0.00	
	30043	172	189.69	4.88		30016	87	160.39	1.16	
	30044	186	211.27	41.98		30025	4	42.97	33.33	
	30045	66	164.26	3.13		30054	16	134.41	-11.11	
	30046	47	126.28	-26.56		30055	0	0.00	-100.00	
	30047	128	195.66	18.52		30056	1	45.11	0.00	
	30052	47	71.26	-21.67		30012	37	134.03	-7.50	
	30071	41	162.58	36.67		30013	46	174.45	48.39	
	30078	32	89.33	-20.00	Rockdale	30058	0	0.00	0.00	
	30084	11	28.58	22.22		30094	54	154.60	12.50	
	30087	14	35.00	0.00		30252	0	0.00	0.00	
	30092	58	163.75	-9.38		30281	3	4.44	200.00	
	30093	61	110.69	-12.86		30294	2	4.79	0.00	
	30096	90	132.43	-3.23		<b>Overall 14-day Case Rates per 100,000</b>				
	30097	34	72.49	30.77	Georgia	-	-	19,139	182.00	8.33
	30340	9	32.11	-10.00	Gwinnett	-	-	1,410	152.00	11.76
30360	3	18.84	-50.00	Newton	-	-	127	116.0	8.41	
30517	13	88.69	85.71	Rockdale	-	-	139	153.00	26.45	

Data Source: DPH County Indicator Report, SendSS, data pulled and cleaned as of Monday at 9am. Case rate is reported as 14-day case count per 100k residents based on 2018 census data. Case counts and case rates are calculated using total confirmed and presumptive cases.

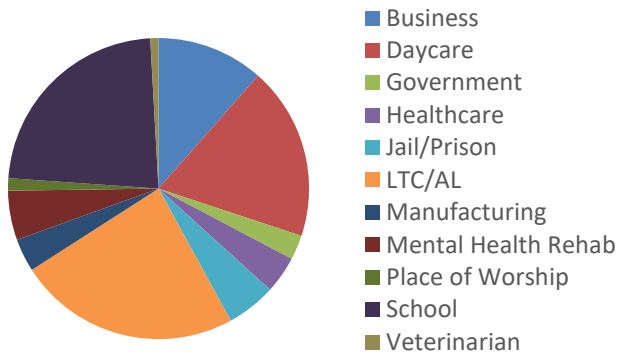
# Epidemiology Overview for Outbreaks



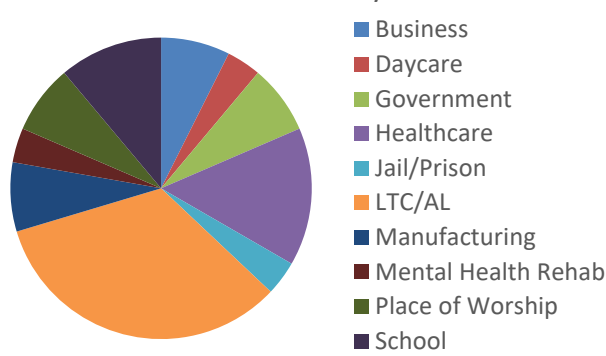
## COVID-19 Snapshot, data as 12pm October 26, 2020

All three counties within the districts are experiencing outbreaks of COVID-19. The information below is intended to provide information on where outbreaks are occurring within the district by county. Totals represent data collected since March 19, 2020.

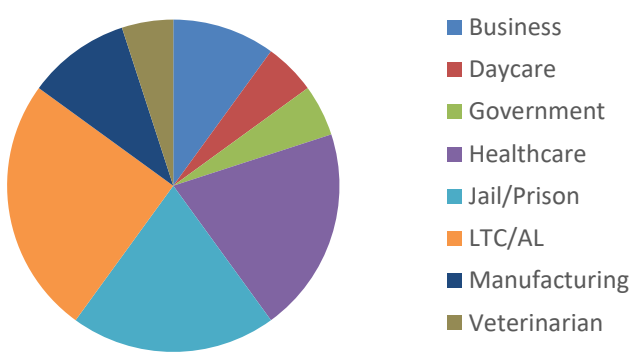
Number of Outbreaks by Facility Type for Gwinnett County



Number of Outbreaks by Facility type for Newton County

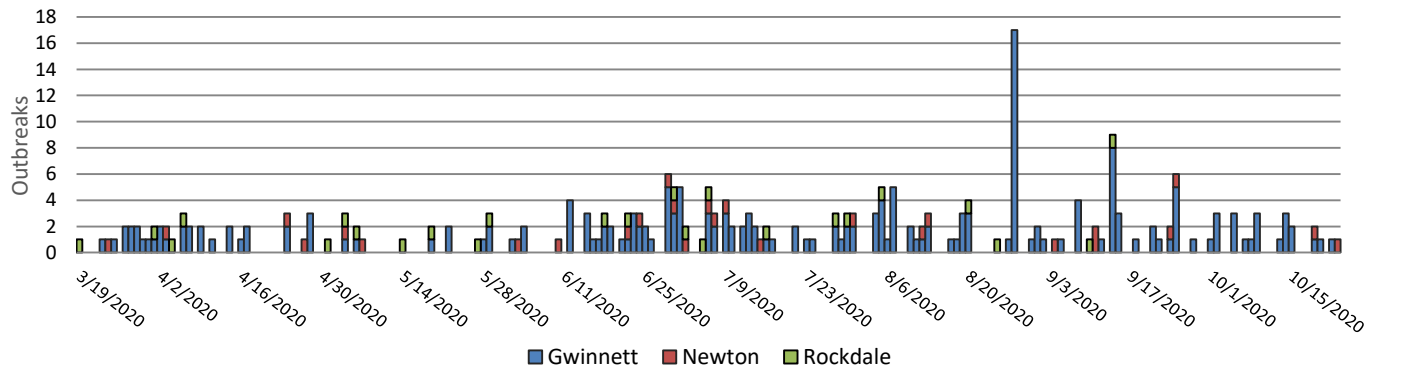


Number of Outbreaks by Facility Type for Rockdale County



Number of Outbreaks by Facility Type N=273			
Facility Type	Gwinnett n=226	Newton n=27	Rockdale n=20
Business	11.50%	7.41%	10.00%
Government	2.65%	7.41%	5.00%
Daycare	18.58%	3.70%	5.00%
Healthcare	3.98%	14.81%	20.00%
Jail/Prison	5.31%	3.70%	20.00%
LTC/AL	23.89%	33.33%	25.00%
Manufacturing	3.54%	7.41%	10.00%
Mental Health Rehab	5.31%	3.70%	0%
Place of Worship	1.33%	7.41%	0%
Schools	23.01%	11.11%	0%
Veterinarian	0.88%	0%	5.00%

Number of Outbreaks Per County Over Time, Gwinnett, Newton and Rockdale Counties, as of 10/26/2020



Source for data provided above: GA DPH, State Electronic Disease Surveillance System; Note: All data is provisional as data reporting, investigation, cleaning, and validating is ongoing; † Represents total confirmed and presumptive cases

# Epidemiology Overview for Gwinnett County

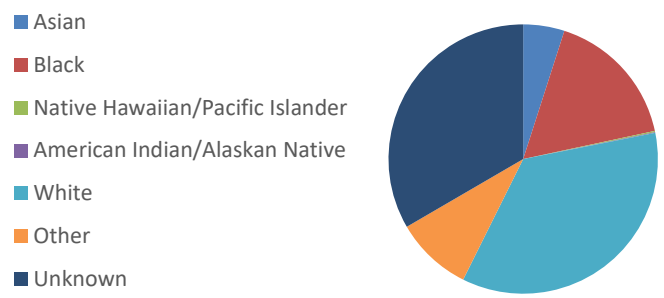


## COVID-19 Snapshot, data as of 9am October 26, 2020

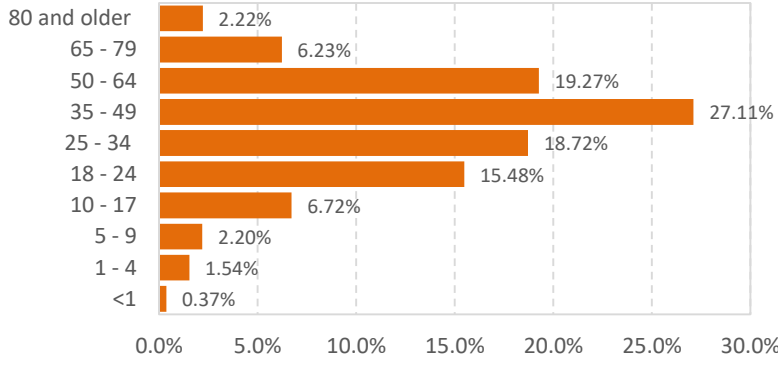
Provided here is a detailed look at the activities of the Epidemiology Program in Gwinnett County, one of three counties represented in district 3-4. Gwinnett county's population is 936, 250 and makes up 82.2% of residents within the district.

In Gwinnett County there has been a 2.4% increase in newly confirmed COVID-19 Cases between the week of **10/12/20 – 10/19/2020 (n=31,068)** and **10/19/20 – 10/26/2020 (n=31,809)**.

### Race Distribution of Cases in Gwinnett County



### Age Distribution of Cases in Gwinnett County



COVID-19 Cases & Deaths*				
	Confirmed Cases	Presumptive Cases	Total Cases†	Total Deaths‡
Outbreak	1,329	54	1,383	163
<b>Total</b>	<b>29,987</b>	<b>1,822</b>	<b>31,809</b>	<b>454</b>
Illness Characteristics*† N=31,809; n=454				
	Among all Cases	Among Deaths		
<b>Gender</b>				
Male	14,566 (46%)	228 (50%)		
Female	16,508 (52%)	226 (50%)		
<b>Median Age (years)</b>	38	73		
<b>Age range (years)</b>	0 – 119	15 - 102		
<b>Total Hospitalizations</b>	2,834 (9%)	369 (81%)		
<b>Total with Underlying Conditions</b>	6,081 (56%)**	357 (99%)**		
<b>Underlying Conditions unknown</b>	20,984	94		

### Total Cases & Deaths by Race\*† N = 31,809; Total Deaths n=454

	Among all Cases	Among Deaths		Among all Cases	Among Deaths
<b>Asian</b>	<b>1,576 (4.95%)</b>	<b>37 (8.15%)</b>	<b>White</b>	<b>11,284 (35.47%)</b>	<b>245 (53.96%)</b>
Hispanic/Latino	14 (0.04%)	0 (0%)	Hispanic/Latino	4,839 (15.21%)	58 (12.78%)
Non-Hispanic/ Latino	1,266 (3.98%)	37 (8.15%)	Non-Hispanic/ Latino	5,422 (17.05%)	186 (40.97%)
Not Specified	296 (0.93%)	0 (0%)	Not Specified	1,023 (3.22%)	<5 (0.22%)
<b>Black</b>	<b>5,311 (16.70%)</b>	<b>118 (25.99%)</b>	<b>Other</b>	<b>2,945 (9.26%)</b>	<b>47 (10.13%)</b>
Hispanic/Latino	143 (0.45%)	<5 (0.22%)	Hispanic/Latino	2,049 (6.44%)	46 (10.13%)
Non-Hispanic/ Latino	4,424 (13.91%)	117 (25.77%)	Non-Hispanic/ Latino	379 (1.19%)	<5 (0.22%)
Not Specified	744 (2.34%)	<5 (0%)	Not Specified	517 (1.63%)	0 (0%)
<b>Native Hawaiian/Pacific Islander</b>	<b>47 (0.15%)</b>	<b>&lt;5 (0.44%)</b>	<b>Unknown</b>	<b>10,620 (33.39%)</b>	<b>5 (1.10%)</b>
Hispanic/Latino	10 (0.03%)	0 (0%)	Hispanic/Latino	1,575 (4.95%)	<5 (0.44%)
Non-Hispanic/ Latino	30 (0.09%)	<5 (0.44%)	Non-Hispanic/ Latino	414 (1.30%)	<5 (0.22%)
Not Specified	7 (0.02%)	0 (0%)	Not Specified	8,631 (27.13%)	<5 (0.44%)
<b>American Indian/Alaskan Native</b>	<b>26 (0.08%)</b>	<b>0 (0%)</b>			
Hispanic/Latino	6 (0.02%)	0 (0%)			
Non-Hispanic/Latino	16 (0.05%)	0 (0%)			
Not Specified	<5 (0.01%)	0 (0%)			

\*Data Source: GA DPH, State Electronic Disease Surveillance System  
 \*\*Among patients with underlying conditions information available  
 Note: All data is provisional as data reporting, investigation, cleaning, and validating is ongoing.  
 † Represents total confirmed and presumptive cases

Confirmed cases are those tested using Molecular Tests (i.e. PCR).  
 Presumptive Cases are those tested using Antigen Tests.

# Epidemiology Overview for Newton County

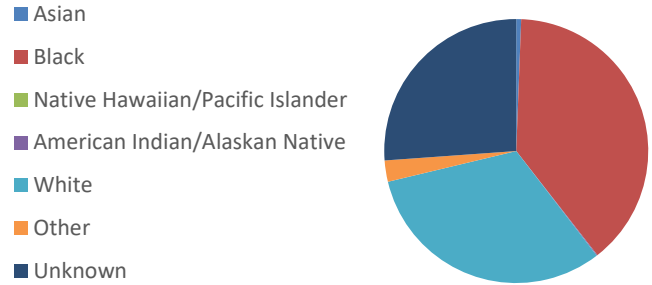


## COVID-19 Snapshot, data as of 9am October 26, 2020

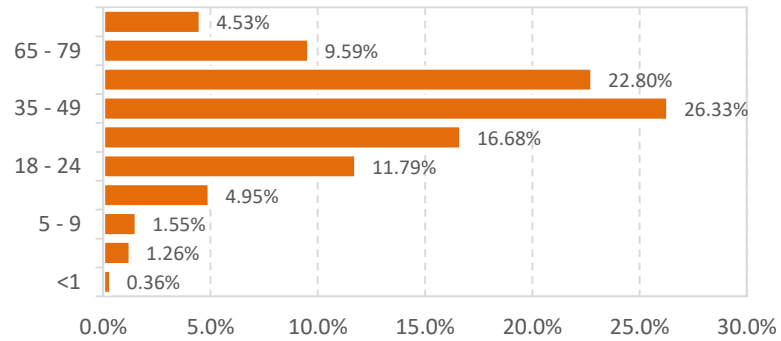
Provided here is a detailed look at the activities of the Epidemiology Program in Newton County, one of three counties represented in district 3-4. Newton county's population is 111, 744 and makes up 9.8% of residents within the district.

In Newton County there has been a 2.3% increase in newly confirmed COVID-19 Cases between the week of 10/12/20 – 10/19/20 (n=3,019) and 10/19/20 – 10/26/20 (n=3,088).

### Race Distribution of Cases in Newton County



### Age Distribution of Cases for Newton County



COVID-19 Cases & Deaths*				
	Confirmed Cases	Presumptive Cases	Total Cases†	Total Deaths†
Outbreak	276	7	283	47
Total	2,815	273	3,088	97
Illness Characteristics*† N=3,088; n=97				
	Among all Cases	Among Deaths		
Gender				
Male	1,303 (42%)	45 (46%)		
Female	1,729 (56%)	51 (53%)		
Median Age (years)	44	79		
Age range (years)	0 - 100	50 - 98		
Total Hospitalizations	293 (9%)	51 (53%)		
Total with Underlying Conditions	694 (60%)**	47 (96%)**		
Underlying Conditions unknown	1,947	48		

### Total Cases & Deaths by Race\*† N = 3,088; Total Deaths n=97

	Among all Cases	Among Deaths		Among all Cases	Among Deaths
<b>Asian</b>	<b>18 (0.58%)</b>	<b>0 (0%)</b>	<b>White</b>	<b>1,009 (32.67%)</b>	<b>60 (61.86%)</b>
Hispanic/Latino	0 (0%)	0 (0%)	Hispanic/Latino	137 (4.44%)	<5 (1.03%)
Non-Hispanic/ Latino	16 (0.52%)	0 (0%)	Non-Hispanic/ Latino	794 (25.71%)	59 (60.82%)
Not Specified	<5 (0.06%)	0 (0%)	Not Specified	78 (2.53%)	0 (0%)
<b>Black</b>	<b>1,239 (40.12%)</b>	<b>34 (35.05%)</b>	<b>Other</b>	<b>77 (2.49%)</b>	<b>0 (0%)</b>
Hispanic/Latino	10 (0.32%)	0 (0%)	Hispanic/Latino	35 (1.13%)	0 (0%)
Non-Hispanic/ Latino	1,077 (34.88%)	34 (35.05%)	Non-Hispanic/ Latino	12 (0.39%)	0 (0%)
Not Specified	152 (4.92%)	0 (0%)	Not Specified	30 (0.97%)	0 (0%)
<b>Native Hawaiian/Pacific Islander</b>	<b>0 (0%)</b>	<b>0 (0%)</b>	<b>Unknown</b>	<b>743 (24.06%)</b>	<b>&lt;5 (3.09%)</b>
Hispanic/Latino	0 (0%)	0 (0%)	Hispanic/Latino	23 (0.74%)	0 (0%)
Non-Hispanic/ Latino	0 (0%)	0 (0%)	Non-Hispanic/ Latino	44 (1.42%)	<5 (1.03%)
Not Specified	0 (0%)	0 (0%)	Not Specified	676 (21.89%)	<5 (2.06%)
<b>American Indian/Alaskan Native</b>	<b>&lt;5 (0.06%)</b>	<b>0 (0%)</b>	*Data Source: GA DPH, State Electronic Disease Surveillance System		
Hispanic/Latino	<5 (0.03%)	0 (0%)	**Among patients with underlying conditions information available		
Non-Hispanic/Latino	<5 (0.03%)	0 (0%)	Note: All data is provisional as data reporting, investigation, cleaning, and validating is ongoing.		
Not Specified	0 (0%)	0 (0%)	† = Represents total confirmed and presumptive cases		

Confirmed cases are those tested using Molecular Tests (i.e. PCR).  
Presumptive Cases are those tested using Antigen Tests.

# Epidemiology Overview for Rockdale County

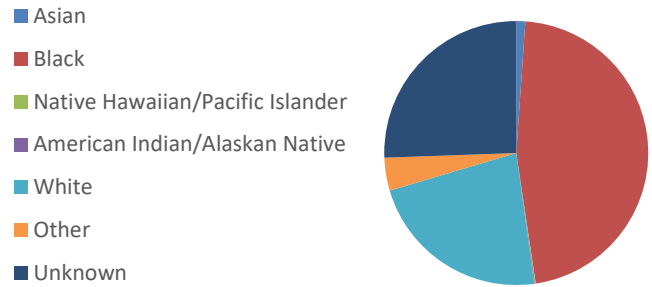


## COVID-19 Snapshot, data as of 9am October 26, 2020

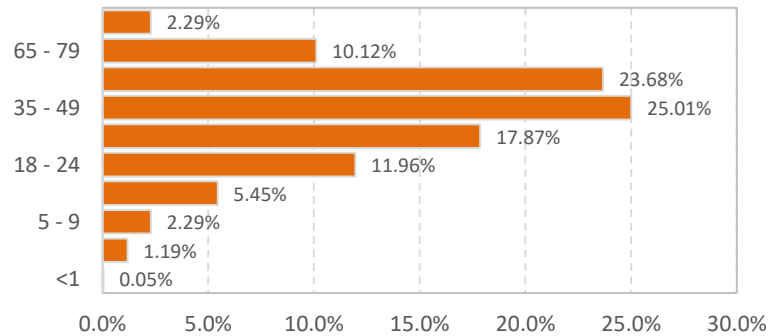
Provided here is a detailed look at the activities of the Epidemiology Program in Rockdale County, one of three counties represented in district 3-4. Rockdale county's population is 90, 896 and makes up 7.9% of residents within the district.

In Rockdale County there has been a 4.2% increase in newly confirmed COVID-19 Cases between the week of **10/19/2020 – 10/26/2020 (n=2,096)** and **10/19/2020 – 10/26/2020 (n=2,183)**.

### Race Distribution of Cases in Rockdale County



### Age Distribution of Cases for Rockdale County



COVID-19 Cases & Deaths*				
	Confirmed Cases	Presumptive Cases	Total Cases†	Total Deaths‡
Outbreak	122	4	126	4
<b>Total</b>	<b>2,084</b>	<b>99</b>	<b>2,183</b>	<b>41</b>
Illness Characteristics*† N=2,183 n=41				
	Among all Cases	Among Deaths		
<b>Gender</b>				
Male	947 (43%)	20 (51%)		
Female	1,191 (55%)	21 (49%)		
<b>Median Age (years)</b>	41	69		
<b>Age range (years)</b>	0 – 100	27 – 93		
<b>Total Hospitalizations</b>	263 (12%)	32 (78%)		
<b>Total with Underlying Conditions</b>	572 (66%)**	32 (100%)**		
<b>Underlying Conditions unknown</b>	1,316	9		

Total Cases & Deaths by Race*† N = 2,183; Total Deaths n=41				
	Among all Cases	Among Deaths	Among all Cases	Among Deaths
<b>Asian</b>	<b>24 (1.10%)</b>	<b>0 (0%)</b>	<b>White</b>	<b>493 (22.58%)</b>
Hispanic/Latino	0 (0%)	0 (0%)	Hispanic/Latino	15 (36.59%)
Non-Hispanic/ Latino	20 (0.92%)	0 (0%)	Non-Hispanic/ Latino	168 (7.70%)
Not Specified	<5 (0.18%)	0 (0%)	Non-Hispanic/ Latino	275 (12.60%)
<b>Black</b>	<b>1,016 (46.54%)</b>	<b>23 (56.10%)</b>	Not Specified	13 (31.71%)
Hispanic/Latino	9 (0.41%)	0 (0%)	Not Specified	50 (2.29%)
Non-Hispanic/ Latino	849 (38.89%)	22 (53.66%)	<b>Other</b>	<b>88 (4.03%)</b>
Not Specified	158 (7.24%)	<5 (2.44%)	Hispanic/Latino	<5 (2.44%)
<b>Native Hawaiian/Pacific Islander</b>	<b>&lt;5 (0.09%)</b>	<b>0 (0%)</b>	Hispanic/Latino	45 (2.06%)
Hispanic/Latino	0 (0%)	0 (0%)	Non-Hispanic/ Latino	<5 (2.44%)
Non-Hispanic/ Latino	<5 (0.09%)	0 (0%)	Non-Hispanic/ Latino	18 (0.82%)
Not Specified	0 (0%)	0 (0%)	Not Specified	0 (0%)
<b>American Indian/Alaskan Native</b>	<b>&lt;5 (0.09%)</b>	<b>&lt;5 (2.44%)</b>	Not Specified	25 (1.15%)
Hispanic/Latino	0 (0%)	0 (0%)	<b>Unknown</b>	<b>558 (25.56%)</b>
Non-Hispanic/Latino	<5 (0.09%)	<5 (2.44%)	Hispanic/Latino	5 (2.44%)
Not Specified	0 (0%)	0 (0%)	Hispanic/Latino	34 (1.56%)
<b>Other</b>	<b>88 (4.03%)</b>	<b>&lt;5 (2.44%)</b>	Non-Hispanic/ Latino	0 (0%)
Hispanic/Latino	45 (2.06%)	<5 (2.44%)	Non-Hispanic/ Latino	19 (0.87%)
Non-Hispanic/ Latino	18 (0.82%)	<5 (2.44%)	Not Specified	505 (23.13%)
Not Specified	25 (1.15%)	<5 (2.44%)		

\*Data Source: GA DPH, State Electronic Disease Surveillance System  
 \*\*Among patients with underlying conditions information available  
 Note: All data is provisional as data reporting, investigation, cleaning, and validating is ongoing.  
 † Represents total confirmed and presumptive cases

Confirmed cases are those tested using Molecular Tests (i.e. PCR).  
 Presumptive Cases are those tested using Antigen Tests.